

## Coronavirus Disease 2019 (COVID-19): Screening and Testing Information

If you are showing signs and symptoms of COVID-19, please call ahead to your healthcare provider to be evaluated and determine if you need to be tested. If you do not have a primary care provider, below is a list of healthcare networks that can help. If you see a doctor at one of the health systems below, call or use the hospital's information line below.

- **Nebraska Medicine, Bellevue Hospital**  
COVID-19 Information Hotline and Referral – 800-922-0000
- **CHI (Creighton University Medical Center Bergan Mercy, Immanuel Hospital, Lakeside, St. Elizabeth's, St. Francis, Good Samaritan, and others)**  
<https://www.chihealth.com> – Virtual Care (Available 24/7)
- **Methodist Health**  
COVID-19 Hotline – 402-815-7425 (SICK) (Available 24/7)
- **Bryan Health**  
<https://www.bryanhealth.com> – EZ Visit (*Coronavirus questions will be answered free of charge*)  
COVID-19 hotline – 402-481-0500 (Available 24/7)

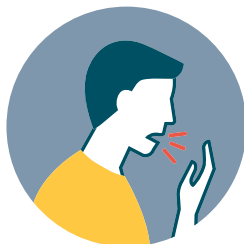
**Coronavirus disease 2019 (COVID-19)** is a respiratory disease caused by a new virus strain that can spread from person to person, causing severe illness including pneumonia in some people.

Symptoms can appear 2 to 14 days after exposure to the virus. The most common symptoms reported are:

Fever



Cough



Fatigue



Shortness of breath or difficulty breathing

